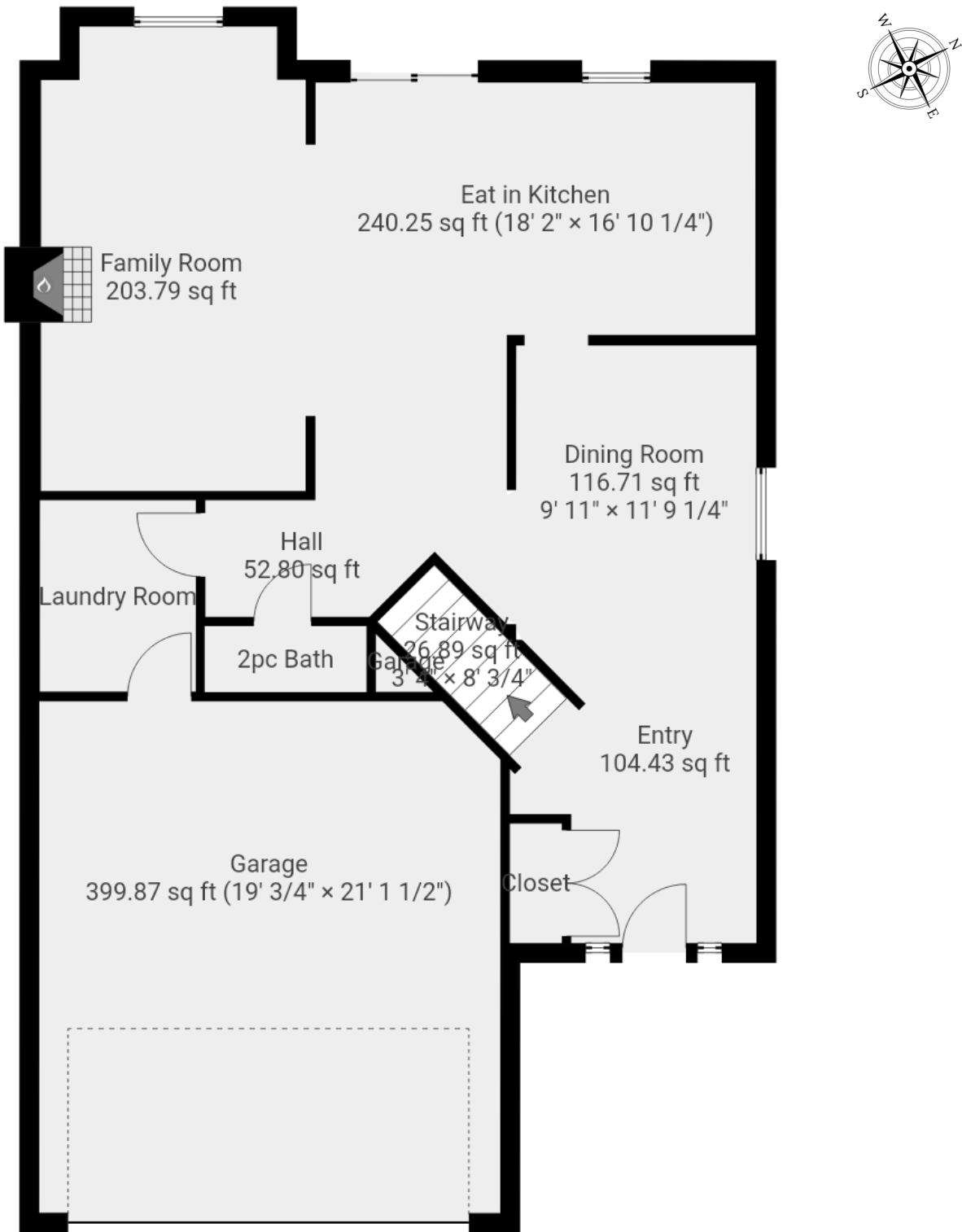


**69 Brookheath Lane**  
Mount Hope, ON

**Total Above Grade Exterior ft<sup>2</sup>**  
Approx Above Grade Exterior Area = 1924

**Total Exterior ft<sup>2</sup>**  
Approx Exterior Area (basement included) = 2924



**Main Floor**  
(above grade)

Approx Interior Area = 880 ft<sup>2</sup>  
Approx Exterior Area = 968 ft<sup>2</sup>

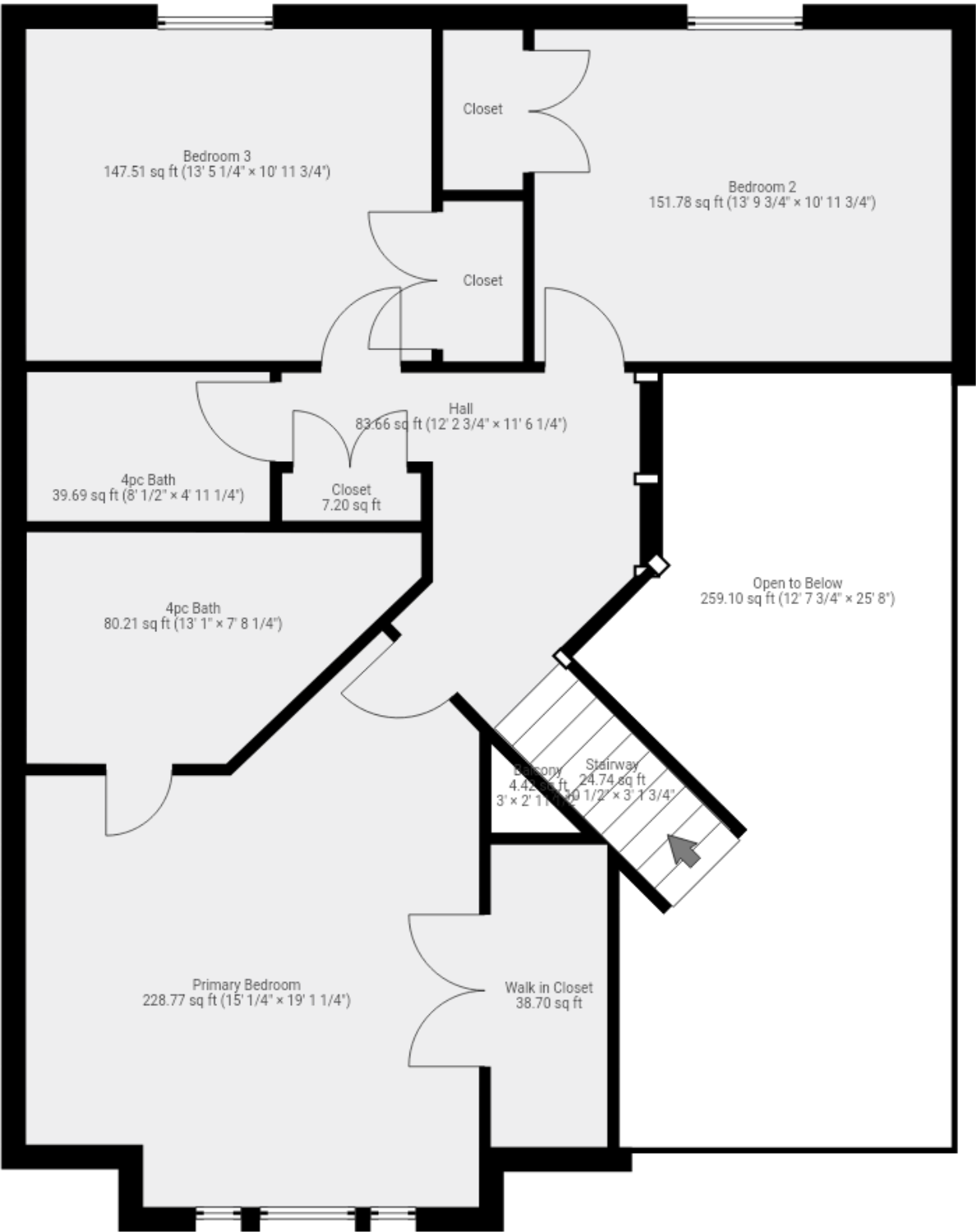
All room dimensions and floor areas must be considered approximate and are subject to independent verification.



**69 Brookheath Lane**  
Mount Hope, ON

**Total Above Grade Exterior ft<sup>2</sup>**  
Approx Above Grade Exterior Area = 1924

**Total Exterior ft<sup>2</sup>**  
Approx Exterior Area (basement included) = 2924



**Second Floor**

(above grade)

Approx Interior Area = 876 ft<sup>2</sup>

Approx Exterior Area = 956 ft<sup>2</sup>

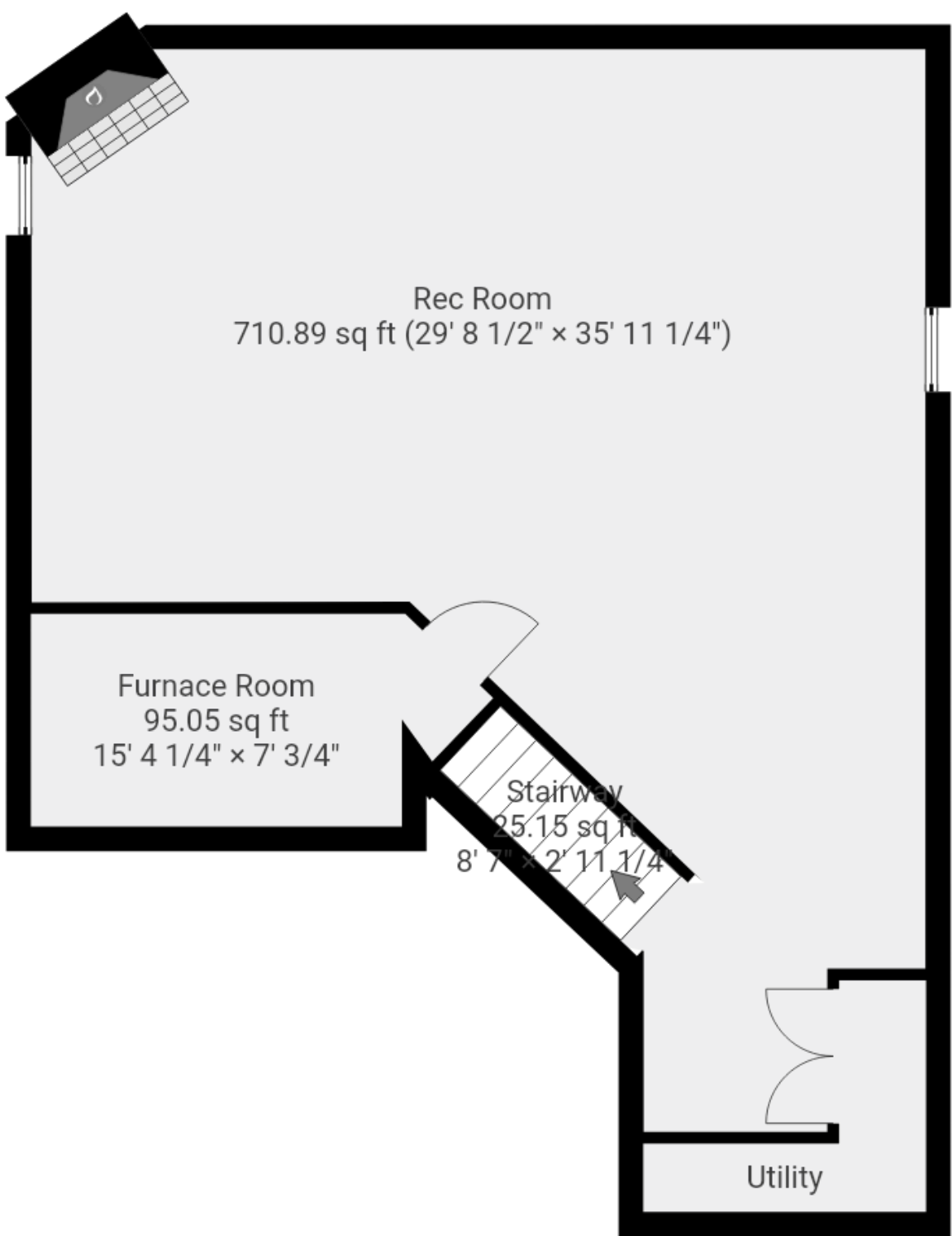
All room dimensions and floor areas must be considered approximate and are subject to independent verification.



**69 Brookheath Lane**  
Mount Hope, ON

**Total Above Grade Exterior ft<sup>2</sup>**  
Approx Above Grade Exterior Area = 1924

**Total Exterior ft<sup>2</sup>**  
Approx Exterior Area (basement included) = 2924



**Basement**  
(below grade)

Approx Interior Area = 886 ft<sup>2</sup>

Approx Exterior Area = 1000 ft<sup>2</sup>

*All room dimensions and floor areas must be considered approximate and are subject to independent verification.*



Summary

Main Room Interior Measurements

Room Name	Imperial	Metric	Area
<b>Main Floor (above grade) - Approx Exterior ft<sup>2</sup> = 968</b>			
Dining Room	9' 11" x 11' 9"	3.02m x 3.59m	116.71 ft <sup>2</sup> / 10.84 m <sup>2</sup>
Eat in Kitchen	18' 2" x 16' 10"	5.54m x 5.14m	240.25 ft <sup>2</sup> / 22.32 m <sup>2</sup>
2pc Bath	6' 8" x 2' 9"	2.04m x 0.83m	18.19 ft <sup>2</sup> / 1.69 m <sup>2</sup>
Entry	10' 2" x 12' 6"	3.11m x 3.82m	104.43 ft <sup>2</sup> / 9.70 m <sup>2</sup>
Family Room	10' 11" x 19' 2"	3.33m x 5.85m	203.79 ft <sup>2</sup> / 18.93 m <sup>2</sup>
Laundry Room	6' 5" x 7' 11"	1.96m x 2.41m	50.93 ft <sup>2</sup> / 4.73 m <sup>2</sup>
Garage*	19' 1" x 21' 2"	5.81m x 6.44m	399.87 ft <sup>2</sup> / 37.15 m <sup>2</sup>

\* Garage not included in square footage measurements

Second Floor (above grade) - Approx Exterior ft<sup>2</sup> = 956

Primary Bedroom	15' 0" x 19' 1"	4.58m x 5.82m	228.77 ft <sup>2</sup> / 21.25 m <sup>2</sup>
Bedroom 2	13' 10" x 11' 0"	4.21m x 3.35m	151.78 ft <sup>2</sup> / 14.10 m <sup>2</sup>
Bedroom 3	13' 5" x 11' 0"	4.10m x 3.35m	147.51 ft <sup>2</sup> / 13.70 m <sup>2</sup>
4pc Bath	8' 0" x 4' 11"	2.45m x 1.50m	39.69 ft <sup>2</sup> / 3.69 m <sup>2</sup>
4pc Ensuite	13' 1" x 7' 8" 3'	3.99m x 2.34m	80.21 ft <sup>2</sup> / 7.45 m <sup>2</sup>
Walk in Closet	10" x 10' 0"	1.17m x 3.05m	38.70 ft <sup>2</sup> / 3.60 m <sup>2</sup>

Basement(below grade) - Approx Exterior ft<sup>2</sup> = 1000

Furnace Room	15' 4" x 7' 1"	4.68m x 2.15m	95.05 ft <sup>2</sup> / 8.83 m <sup>2</sup>
Rec Room	29' 8" x 35' 11"	9.06m x 10.95m	710.89 ft <sup>2</sup> / 66.04 m <sup>2</sup>
Utility	9' 5" x 7' 8"	2.86m x 2.34m	36.88 ft <sup>2</sup> / 3.43 m <sup>2</sup>

All room dimensions and floor areas must be considered approximate and are subject to independent verification.

Rooms have irregular shapes and, as such, cannot be truly represented by one length and width. The length and width listed above are the longest length and width of the room. Because of this, room area is not always equal to the product of length and width but has been calculated in any floor area accurately using all wall measurements.

