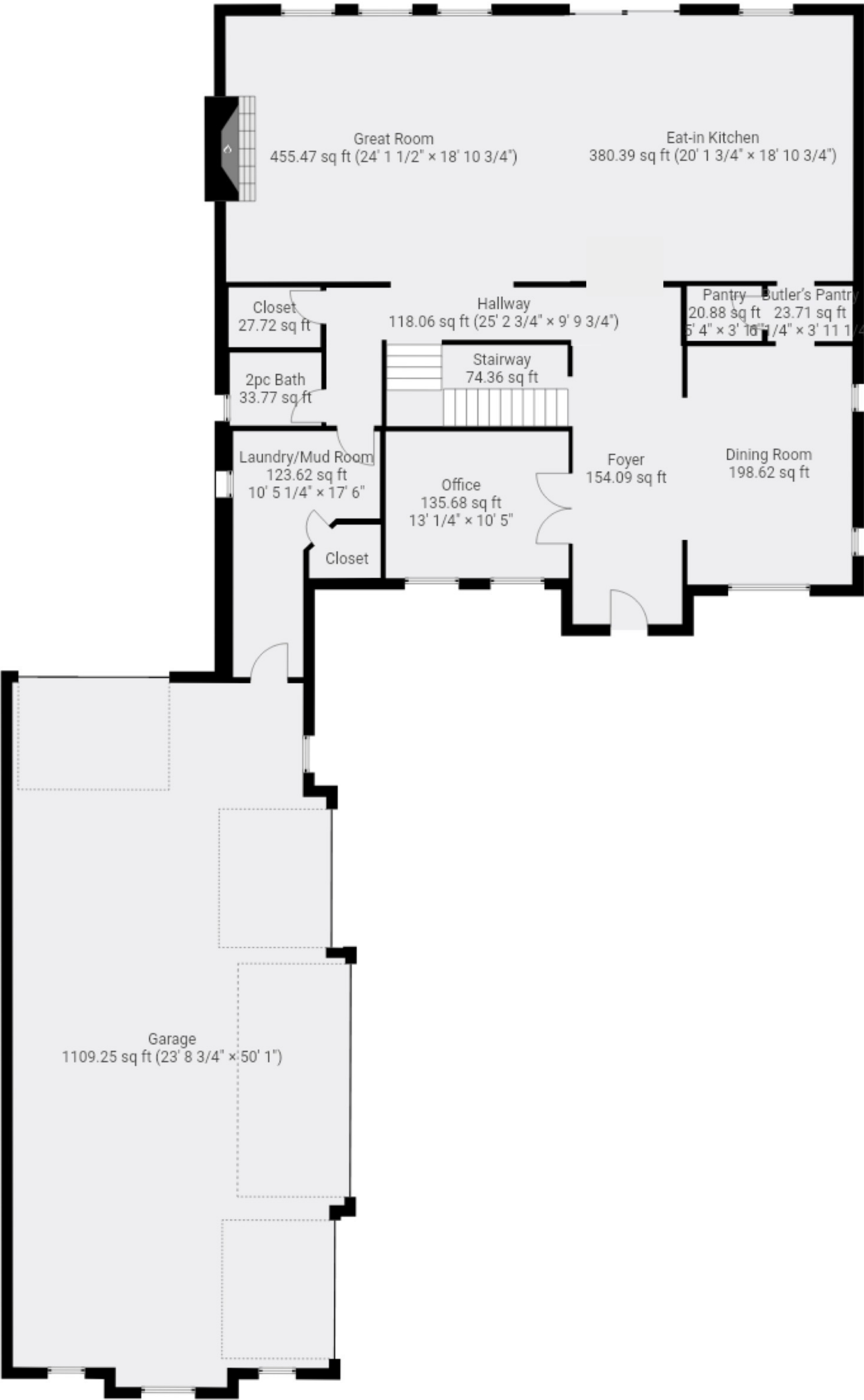


187 Sunnyridge Road
Jerseyville, ON

Total Above Grade Exterior ft²
Approx Above Grade Exterior Area = 3685

Total Exterior ft²
Approx Exterior Area (basement included) = 5840



Main Floor

(above grade)

Approx Interior Area = 1843 ft²

Approx Exterior Area = 1993 ft²

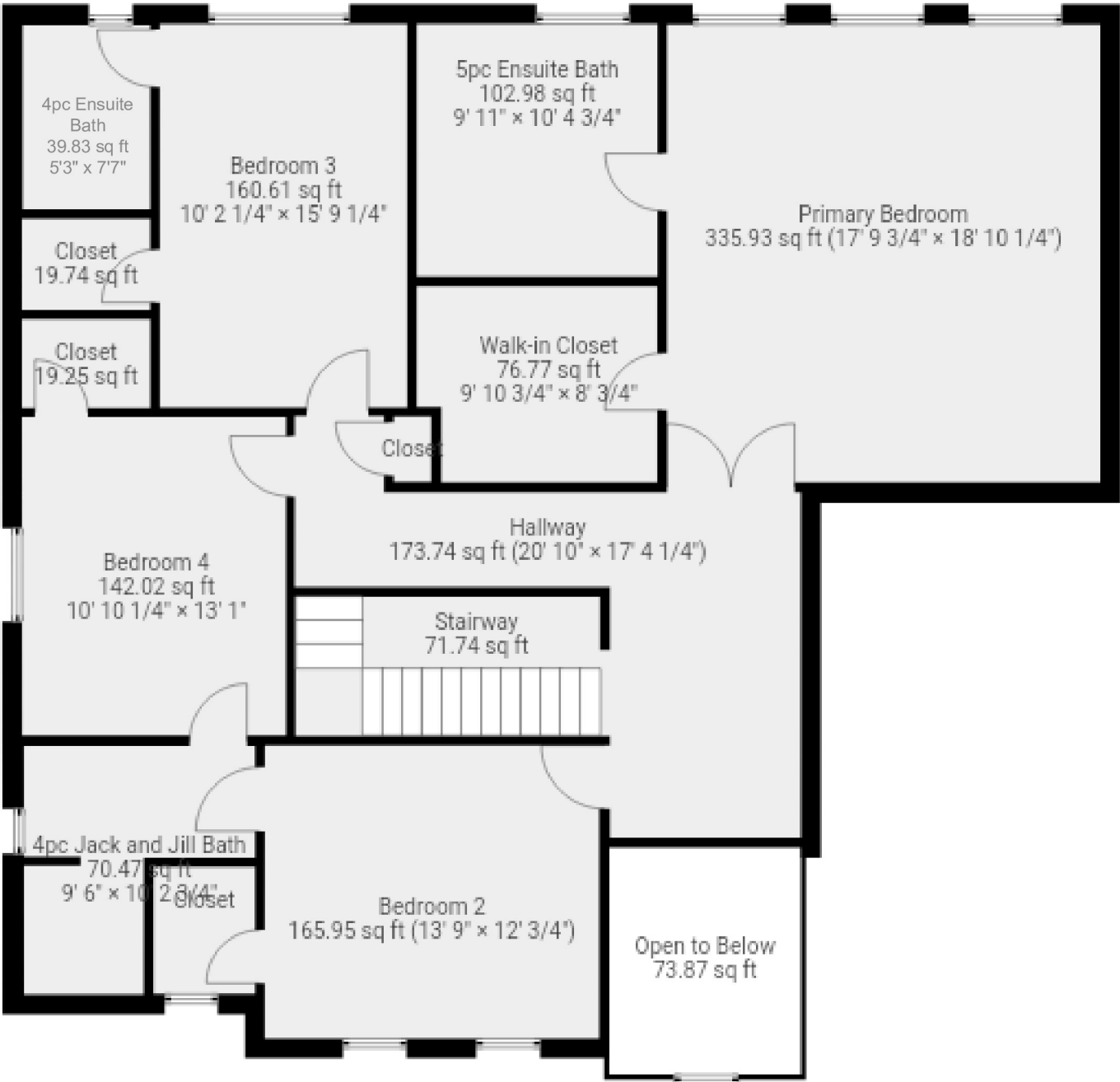
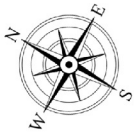
All room dimensions and floor areas must be considered approximate and are subject to independent verification.



187 Sunnyridge Road
Jerseyville, ON

Total Above Grade Exterior ft²
Approx Above Grade Exterior Area = 3685

Total Exterior ft²
Approx Exterior Area (basement included) = 5840



Second Floor

(above grade)

Approx Interior Area = 1555 ft²

Approx Exterior Area = 1692 ft²

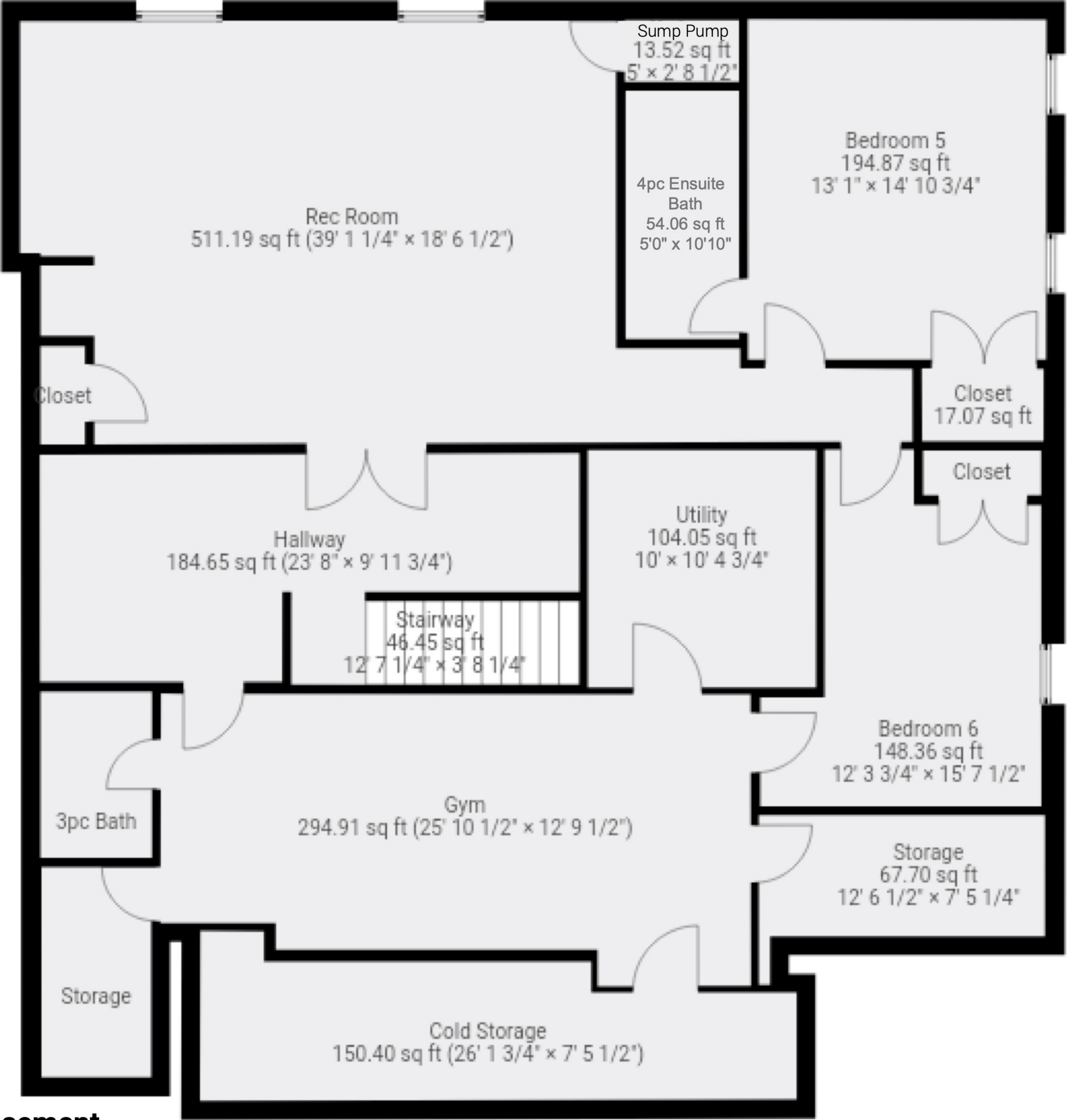
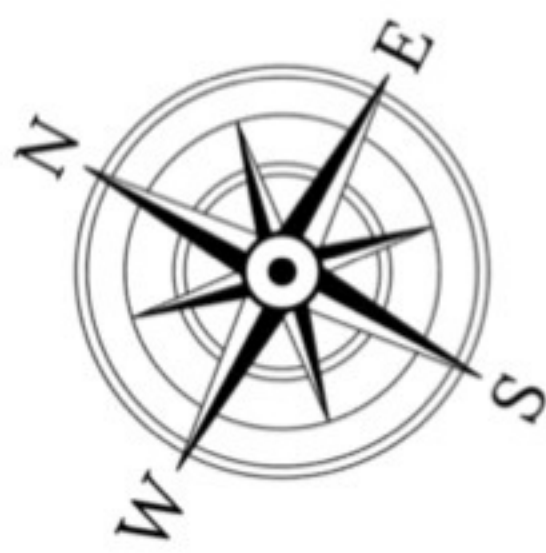
All room dimensions and floor areas must be considered approximate and are subject to independent verification.



187 Sunnyridge Road
Jerseyville, ON

Total Above Grade Exterior ft²
Approx Above Grade Exterior Area = 3685

Total Exterior ft²
Approx Exterior Area (basement included) = 5840



Basement
(below grade)

Approx Interior Area = 1988 ft²
Approx Exterior Area = 2155 ft²

All room dimensions and floor areas must be considered approximate and are subject to independent verification.

Summary

Main Room Interior Measurements			
Room Name	Imperial	Metric	Area
Main Floor (above grade) - Approx Exterior ft² = 1993			
Dining Room	11' 9" x 16' 11"	3.58m x 5.16m	198.62 ft² / 18.45 m²
Eat-in Kitchen	20' 2" x 18' 11"	6.14m x 5.76m	380.39 ft² / 35.34 m²
2pc Bath	6' 6" x 5' 2"	1.99m x 1.58m	33.77 ft² / 3.14 m²
Butler's Pantry	6' 0" x 3' 11"	1.84m x 1.20m	23.71 ft² / 2.20 m²
Foyer	7' 10" x 19' 10"	2.37m x 6.03m	154.09 ft² / 14.32 m²
Great Room	24' 2" x 18' 11"	7.35m x 5.76m	455.47 ft² / 42.31 m²
Laundry/Mud Room	10' 5" x 17' 6"	3.18m x 5.33m	123.62 ft² / 11.48 m²
Office	13' 0" x 10' 5"	3.97m x 3.17m	135.68 ft² / 12.61 m²
Pantry	5' 4" x 3' 11"	1.63m x 1.19m	20.88 ft² / 1.94 m²
Garage*	23' 9" x 50' 1"	7.23m x 15.27m	1109.25 ft² / 103.05 m²
* Garage not included in square footage measurements			
Second Floor (above grade) - Approx Exterior ft² = 1692			
Primary Bedroom	17' 10" x 18' 10"	5.43m x 5.75m	335.93 ft² / 31.21 m²
Bedroom 2	13' 9" x 12' 1"	4.19m x 3.68m	165.95 ft² / 15.42 m²
Bedroom 3	10' 2" x 15' 9"	3.11m x 4.81m	160.61 ft² / 14.92 m²
Bedroom 4	10' 10" x 13' 1"	3.31m x 3.99m	142.02 ft² / 13.19 m²
4pc Ensuite Bath	5' 3" x 7' 7"	1.60m x 2.31m	39.83 ft² / 3.70 m²
4pc Jack and Jill Bath	9' 6" x 10' 3"	2.90m x 3.12m	70.47 ft² / 6.55 m²
5pc Ensuite Bath	9' 11" x 10' 5"	3.02m x 3.17m	102.98 ft² / 9.57 m²
Walk-in Closet	9' 11" x 8' 1"	3.02m x 2.46m	76.77 ft² / 7.13 m²
Basement (below grade) - Approx Exterior ft² = 2155			
Bedroom 5	13' 1" x 14' 11"	3.99m x 4.54m	194.87 ft² / 18.10 m²
Bedroom 6	12' 4" x 15' 8"	3.75m x 4.76m	148.36 ft² / 13.78 m²
3pc Bath	4' 11" x 7' 4"	1.49m x 2.22m	35.67 ft² / 3.31 m²
4pc Ensuite Bath	5' 0" x 10' 10"	1.52m x 3.31m	54.06 ft² / 5.02 m²

Cold Storage	26' 2" x 7' 5"	7.97m x 2.27m	150.40 ft ² / 13.97 m ²
Gym	25' 10" x 12' 9"	7.89m x 3.90m	294.91 ft ² / 27.40 m ²
Rec Room	39' 1" x 18' 7"	11.92m x 5.65m	511.19 ft ² / 47.49 m ²
Storage	12' 6" x 7' 5"	3.82m x 2.27m	67.70 ft ² / 6.29 m ²
Storage	4' 10" x 9' 3"	1.47m x 2.81m	44.42 ft ² / 4.13 m ²
Utility	10' 0" x 10' 5"	3.05m x 3.17m	104.05 ft ² / 9.67 m ²

All room dimensions and floor areas must be considered approximate and are subject to independent verification.

Rooms have irregular shapes and, as such, cannot be truly represented by one length and width. The length and width listed above are the longest length and width of the room. Because of this, room area is not always equal to the product of length and width but has been calculated in any floor area accurately using all wall measurements.

